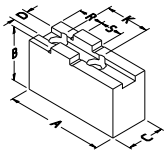


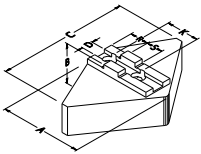
# SCHUNK ROTA-G 200

## Zachte klauwen (nok/groef)



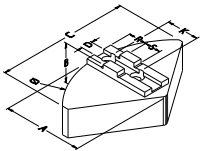
### recht

TYPE	A	B	C	D	K	R	S	BOUT	KG/SET	MATERIAAL
CU20	105	51	22	10	40	34	20	M8	2.2	staal
CU201	100	55	30	10	40	23	20	M8	2.9	staal
DP20	70	40	40	10	40	22	20	M8	2.2	staal
CU204	85	60	40	10	40	23	20	M8	4.0	staal
CU205	95	80	40	10	40	23	20	M8	5.8	staal
CW20	105	51	25	10	40	34	20	M8	0.9	aluminium



### segment omkeerbaar

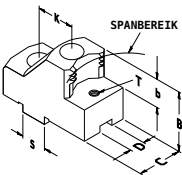
TYPE	A	B	C	D	K	R	S	BOUT	KG/SET	MATERIAAL
CQ20	89	64	150	10	40		20	M8	14.0	staal
HT20	75	64	150	10	40		20	M8	5.9	aluminium



### segment

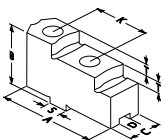
TYPE	A	B	C	D	K	R	S	BOUT	KG/SET	MATERIAAL
CF20	90	51	203Ø	10	40		20	M8	11.0	staal

## Harde klauwen (nok/groef)



### grippklauwen - buitenspanning

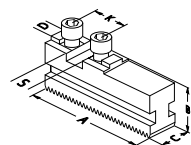
TYPE	SPANBEREIK	GRONDKLAUW POSITIE	B	C	D	K	S	B	T	KG/SET
LY20	30 - 100	1	49	30	10	40	20	20	M6	1.3
	66 - 137	2								
LY22	61 - 132	1								1.2
	97 - 169	2								
LY25	134 - 206	1								1.2



### omkeerbaar

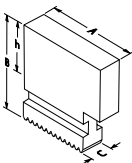
TYPE	A	B	C	D	K	S	T	BOUT	KG/SET
GX20	72	42.0	22	10	40	20	10	M8	0.8

## Grondklauwen



TYPE	A	B	C	D	K	S	BOUT	KG/SET
GBK200	85	29.5	22	10	40	20	M8	1.0

## Zachte monoblok klauwen



TYPE	A	B	C	h	KG/SET
UVB200	84	70	22	45	2.0